



# ARTWORK FOR APPROVAL

**IMPORTANT:** This drawing is for approximate print positional purposes only. It is not intended to be an exact scale or detailed representation of the product. Colour proofs are to be used as a guide only and not a true representation of true product or print colour. If item colours are important, order a sample from our current shipment.

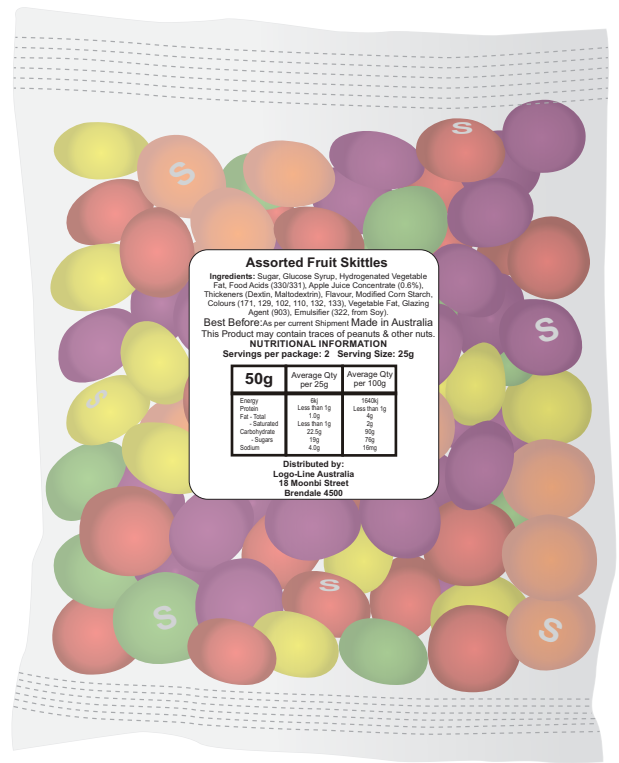
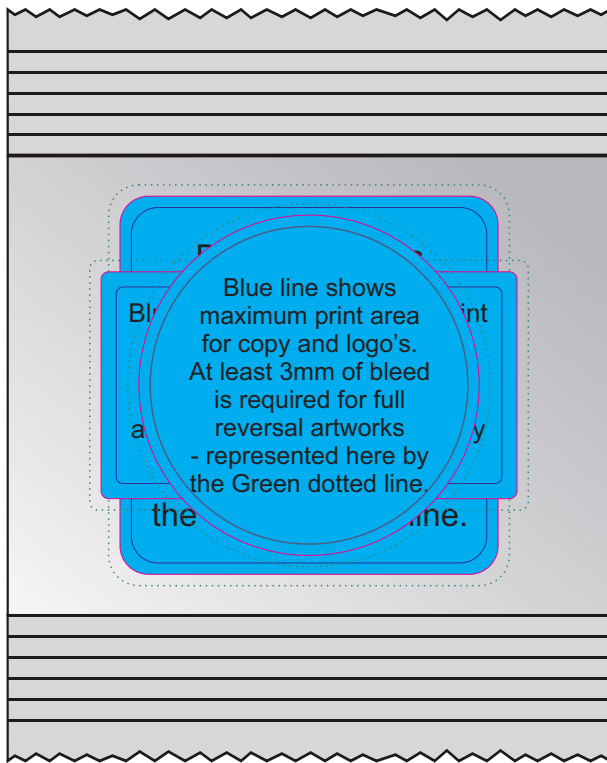
**Order #**  
**Proof #**  
**Date** 00/00/00

**Product Code** : LL0380  
**Description** : Assorted Fruit Skittles in 50 gram Cello Bag  
**Item Colour/s** : Clear/Assorted  
**Quantity** :  
**Decoration Type** : Standard Label  
**Print Colour**



**Please note:** Labels are digitally printed in CMYK. If pantone colour matching is important we require you to provide specific PMS colours, and we will produce closest CMYK colour match possible (to CP equivalent of coated pantone colours - perfect colour match not guaranteed). Vector art is required for colour matching. We are unable to edit colours in rasterized images. Print colours may be altered in appearance if placed on a strong colour background. Design position cannot be guaranteed across the entire order, some movement does occur during printing  
**Important:** Labels are applied by hand and although the greatest care is taken label positioning cannot be guaranteed across the entire order.

Confectionery is packed on various types of equipment, this can affect bags sizes. However weight is always 50 grams. If in doubt please request a sample.



Maximum label size: 50mmL x 50mmH or 55mmL x 30mmH or 45mm Diameter  
 Actual print size:  
 Printed on white label.  
 Pink border shows max label size and is not printed

**INGREDIENTS LABEL**  
 White label with a black print applied to back of cello bag.  
 Ingredients label: 33mmL x 33mmH  
 White Label with Black Thermal Print

**INTERNAL USE ONLY**

**INT:**

QC Code:	New Pte # _____	Info:	Q: _____	Ctns: _____	Wt(kg): _____
PP:	Prt Int: _____	Prep:	S: _____	D: _____	
Rpt Ord:	Rpt Pte # _____	Cat:	E: _____	Ctns: _____	Wt(kg): _____
Split: Y/N	Mach: _____	U/P Int: _____	R/P Int: _____	R: _____	D: _____
Courier:					Total Wt(kg): _____